

SPARE PARTS EXPLODED VIEW
GAS-WALL BOILER ATM. BURNER

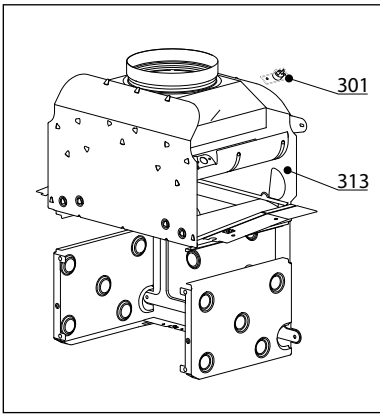
Model

PIGMA ULTRA

R8203479-06 - 18/03/2021

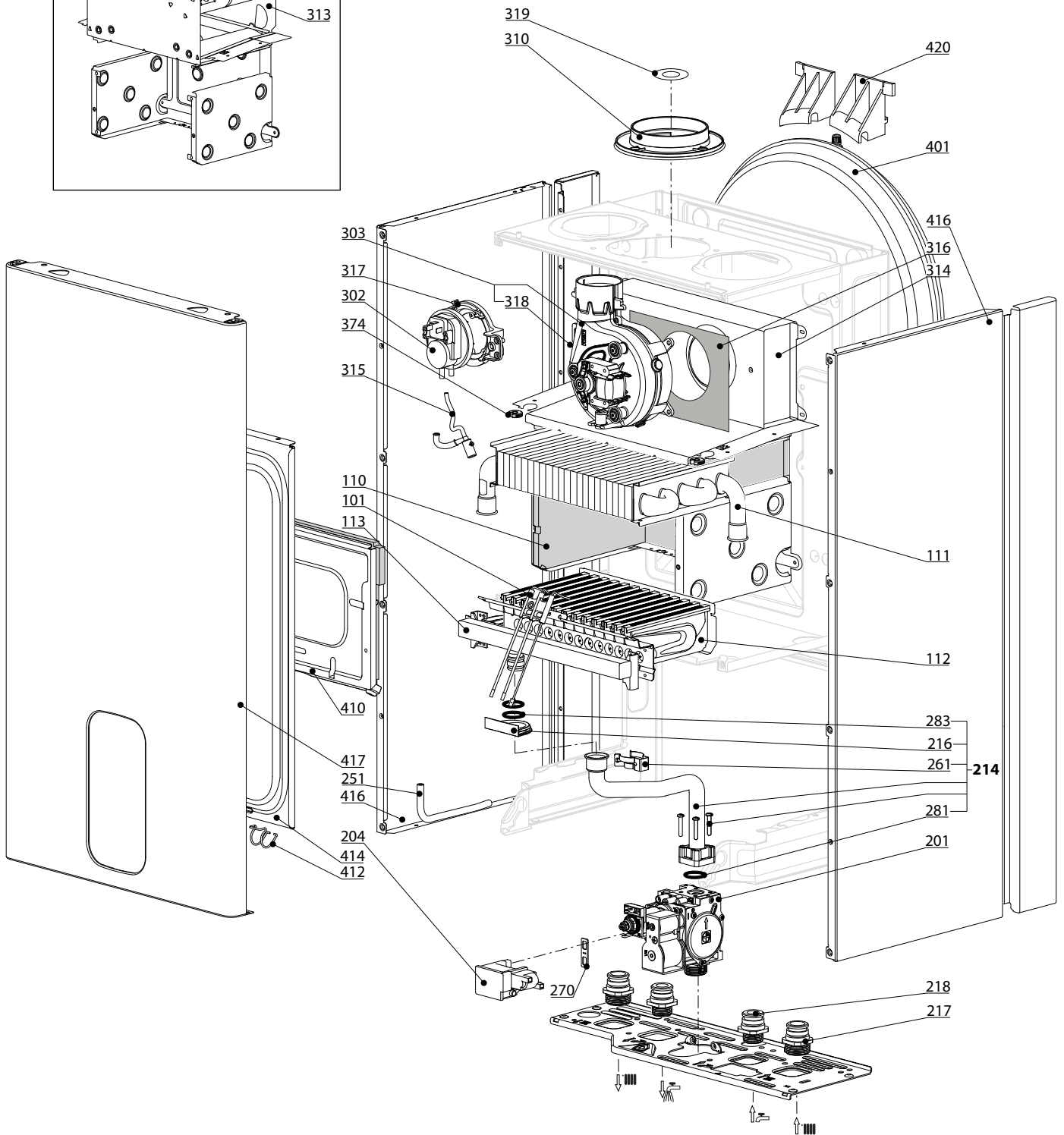
1	3310529	PIGMA ULTRA 25 CF NG	04-2017	-
2	3310531	PIGMA ULTRA 30 CF NG	04-2017	-
3	3310530	PIGMA ULTRA 25 FF NG	04-2017	-
4	3310532	PIGMA ULTRA 30 FF NG	04-2017	-
5	3310533	PIGMA ULTRA 35 FF NG	04-2017	-
6	3310534	PIGMA ULTRA SYSTEM 25 CF NG	04-2017	-
7	3310535	PIGMA ULTRA SYSTEM 25 FF NG	04-2017	-
8	3310536	PIGMA ULTRA SYSTEM 30 FF NG	04-2017	-
9	3310537	PIGMA ULTRA SYSTEM 35 FF NG	04-2017	-
Col	Reference	Model type	Begin	End

100
200
300
400

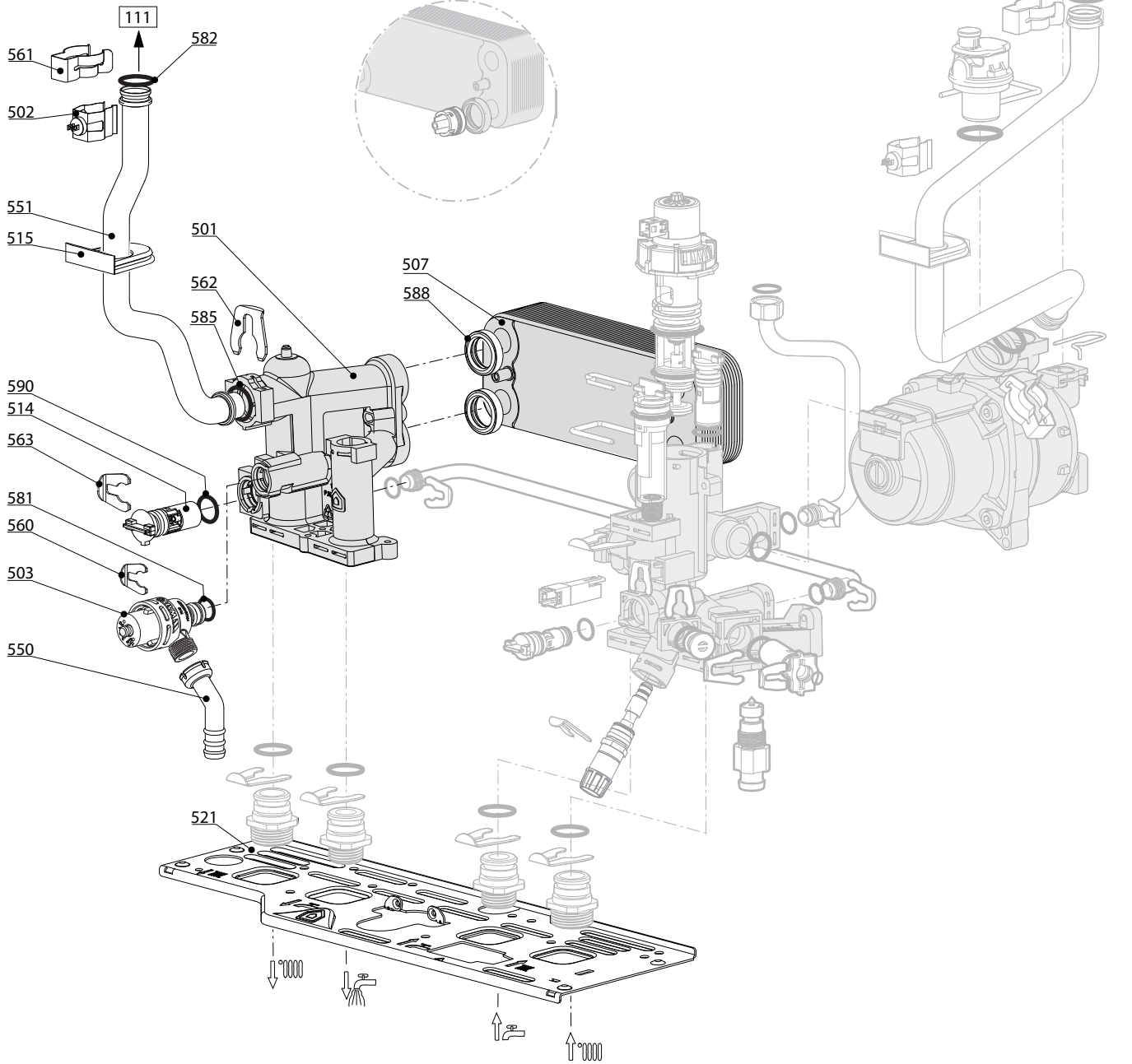
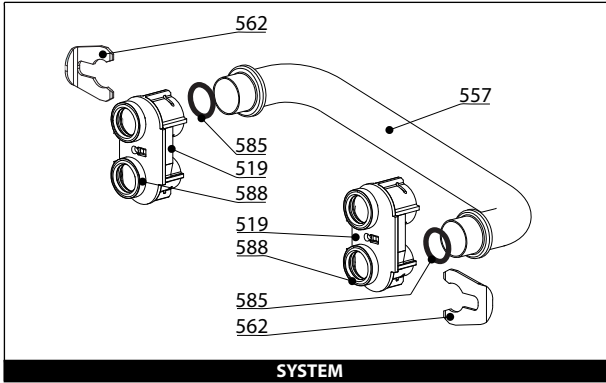


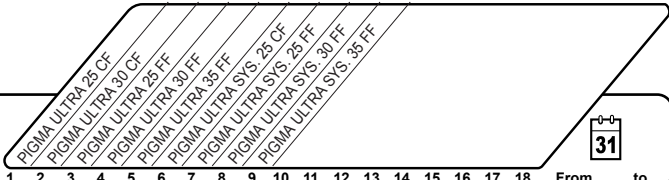
PIGMA ULTRA

Gas-wall boiler atm. burner

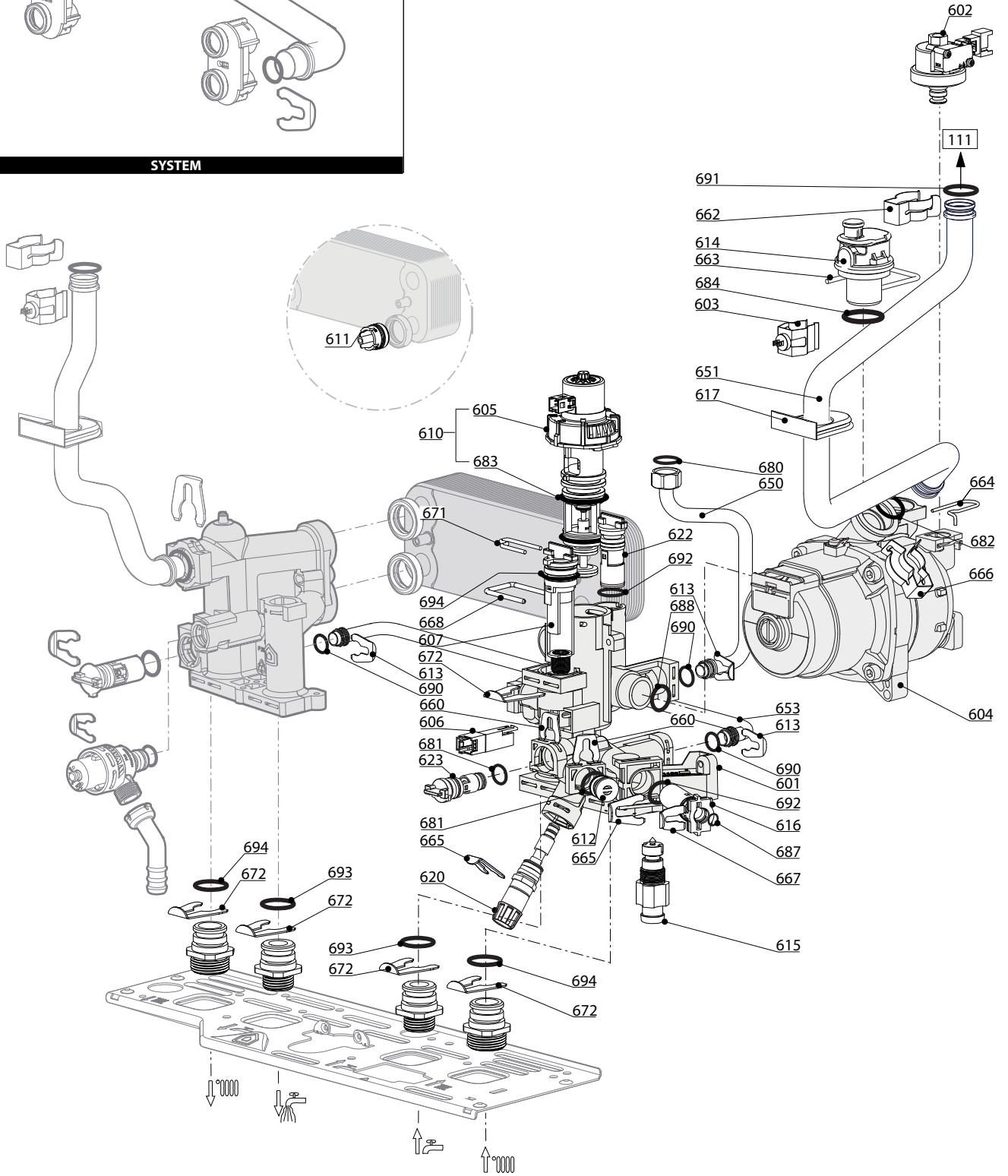
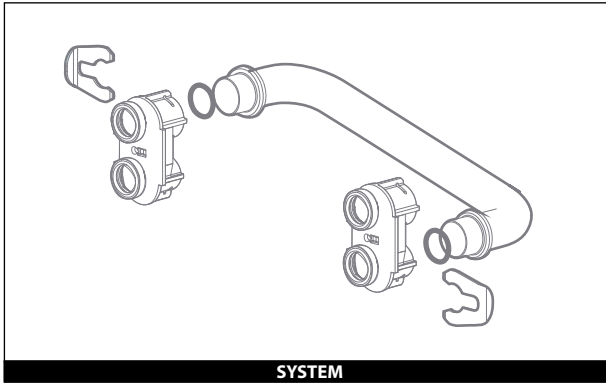


Description	Manf. Pt. N	Type																			From	to
			1	2	3	4	5	6	7	8	9	10	11	12	13	14	15	16	17	18		
0100 BURNER ASSEMBLY																						
0101 ELECTRODE (IGNITION/IONIZATION)	65115802		•	•	•	•	•	•	•	•	•	•	•	•	•	•	•	•	•			
0110 PANELS (KIT)	65104695		•			•			•			•										
PANELS (KIT)	65105029			•				•						•								
PANELS (KIT)	65106298				•						•											
0111 HEAT EXCHANGER (Cu)	65104247		•						•													
HEAT EXCHANGER (Cu)	65105041							•										•				
HEAT EXCHANGER (Cu)	65111931			•																		
HEAT EXCHANGER (KIT) Cu 24	65119090				•									•								
HEAT EXCHANGER (KIT) Cu 28	65119091							•										•				
0112 BURNER 11NP	65106294				•						•											
BURNER 13NP	60001582		•							•												
BURNER 13NP	65104220							•										•				
BURNER 15NP	65105027			•																		
BURNER 16NP	60001596							•											•			
0113 GAS MANIFOLD 11 INJ. D:1.32	65106302	G20				•					•											
GAS MANIFOLD 13 INJ. D:1.25	65104302	G20	•								•											
GAS MANIFOLD 13 INJ. D:1.32	65104226	G20						•										•				
GAS MANIFOLD 15 INJ. D:1.25	65105026	G20		•																		
GAS MANIFOLD 16 INJ. D:1.32	65105997	G20						•											•			
0200 GAS SECTION																						
0201 GAS VALVE	65115771		•	•	•	•	•	•	•	•	•	•	•	•	•	•	•	•	•			
0204 SPARK GENERATOR	65115791		•	•					•													
SPARK GENERATOR	65115791-01				•	•	•	•	•	•	•	•	•	•	•	•	•	•	•			
0214 PIPE (GAS VALVE/BURNER)	65115772		•	•	•	•	•	•	•	•	•	•	•	•	•	•	•	•	•			
0216 GROMMET	60000624		•	•	•	•	•	•	•	•	•	•	•	•	•	•	•	•	•			
0217 CH ADAPTER (3/4")	65114929		•	•	•	•	•	•	•	•	•	•	•	•	•	•	•	•	•			
0218 DHW ADAPTER (1/2")	65114930		•	•	•	•	•	•	•	•	•	•	•	•	•	•	•	•	•			
0251 EPDM PIPE	65115773		•	•	•	•	•	•	•	•	•	•	•	•	•	•	•	•	•			
0261 CLIP	60001861		•	•	•	•	•	•	•	•	•	•	•	•	•	•	•	•	•			
0270 GASKET (SPARK GENERATOR)	574279		•	•	•	•	•	•	•	•	•	•	•	•	•	•	•	•	•			
0281 O-RING 22.22X2.62	65104304		•	•	•	•	•	•	•	•	•	•	•	•	•	•	•	•	•			
0283 O-RING 17.17X1.78	65104303		•	•	•	•	•	•	•	•	•	•	•	•	•	•	•	•	•			
0300 FAN ASSEMBLY																						
0301 THERMOSTAT 75-65°C	999539		•	•	•	•	•	•	•	•	•	•	•	•	•	•	•	•	•			
0302 AIR PRESSURE SWITCH 50 Pa	65104671-01				•	•	•	•	•	•	•	•	•	•	•	•	•	•	•			
0303 FAN 24 KW	65115813				•						•											
FAN 28-32 KW	65115814							•						•								
FAN 32-35 KW	65115815								•									•				
0310 AIR CONNECTION	65115914				•	•	•	•	•	•	•	•	•	•	•	•	•	•	•			
0313 COMBUSTION CHAMBER 24 CF	65104218		•							•												
COMBUSTION CHAMBER 28 CF	65105028			•																		
0314 COMBUSTION CHAMBER 24 FF	65115800					•						•										
COMBUSTION CHAMBER 28 FF	65115799							•						•								
COMBUSTION CHAMBER 32/35 FF	65115798								•									•				
0315 CONDENSATE TRAP	65105349				•	•	•	•	•	•	•	•	•	•	•	•	•	•	•			
0316 PANEL (INSULATION - FAN)	65104305				•	•	•	•	•	•	•	•	•	•	•	•	•	•	•			
0317 SUPPORT (AIR PRESSURE SWITCH)	65115812				•	•	•	•	•	•	•	•	•	•	•	•	•	•	•			
0318 VENTURI 15/24FF	65106516				•						•											
VENTURI 28/32FF	65118171							•						•								
VENTURI 32/35FF	65118172								•									•				
0319 RESTRICTOR KIT	60001598		•	•	•	•	•	•	•	•	•	•	•	•	•	•	•	•	•			
0374 CABLE INLET RUBBER WASHER	60000716		•	•	•	•	•	•	•	•	•	•	•	•	•	•	•	•	•			
0400 SEALED CASE																						
0401 EXPANSION VESSEL 8L	65104261		•	•	•	•	•	•	•	•	•	•	•	•	•	•	•	•	•			
0410 PANEL (COMBUSTION CHAMBER)	65104240		•							•								•				
PANEL (COMBUSTION CHAMBER)	65105033			•					•										•			
PANEL (COMBUSTION CHAMBER)	65106296				•							•										
0412 SPRING FRONT PANEL (KIT)	65107048				•	•	•	•	•	•	•	•	•	•	•	•	•	•	•			
0414 PANEL (FRONT - SEALED CHAMBER)	65105678-02				•	•					•											
PANEL (FRONT - SEALED CHAMBER)	65105679-02								•										•			
0416 SIDE PANELS LEFT+RIGHT-WHITE	65115804		•	•	•	•	•	•	•	•	•	•	•	•	•	•	•	•	•			
0417 CASE PANEL (FRONT)	60002834		•							•												
CASE PANEL (FRONT)	60002834-01				•	•					•								•			
CASE PANEL (FRONT)	60002835			•																		
CASE PANEL (FRONT)	60002835-01								•										•			
0420 EXPANSION VESSEL SUPPORT	65104696		•	•	•	•	•	•	•	•	•	•	•	•	•	•	•	•	•			

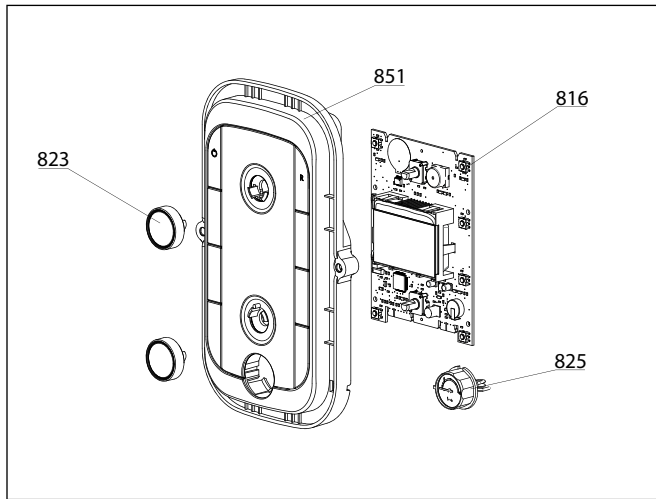
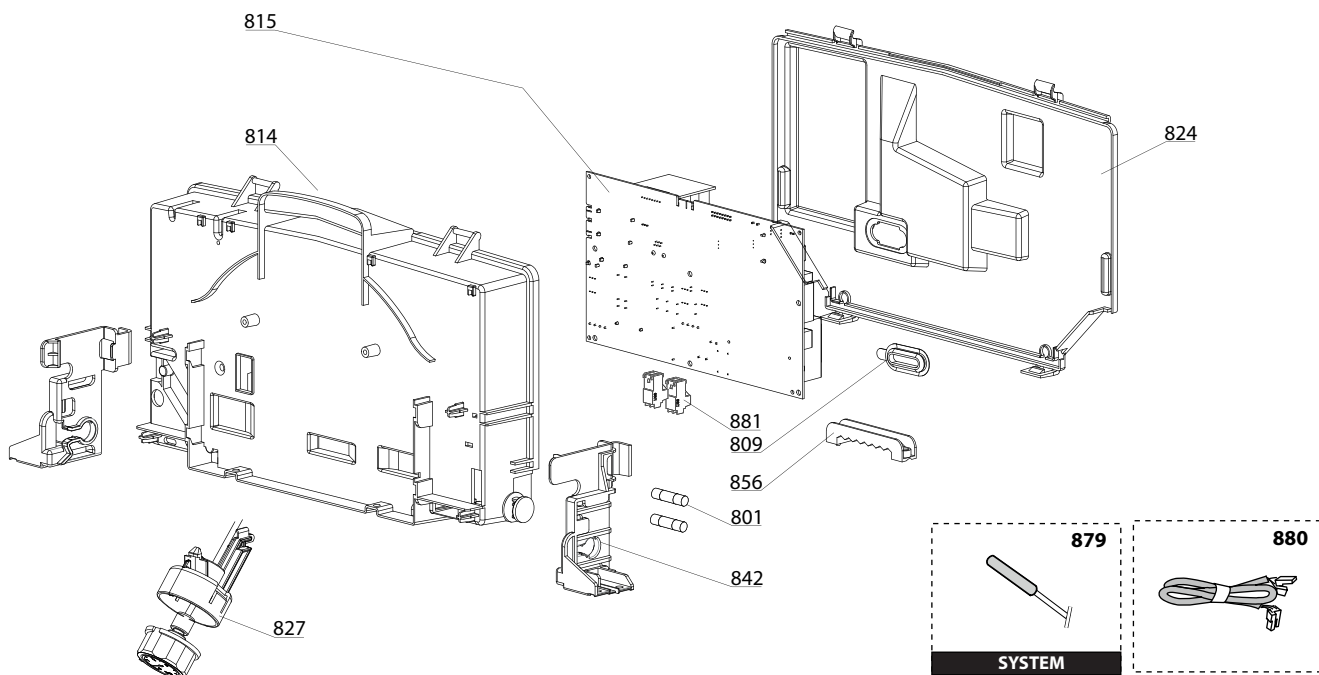


Description	Manf. Pt. N	Type																		
			1	2	3	4	5	6	7	8	9	10	11	12	13	14	15	16	17	18
0500 FLOW GROUP																				
0501 FLOW GROUP	65115933		●	●	●	●	●													
FLOW GROUP	65115933								●	●	●	●								
FLOW GROUP	65117952		●	●	●	●	●													
0502 TEMPERATURE PROBE + CLIP	990686-01		●	●	●	●	●	●	●	●	●	●	●	●	●	●	●	●	●	
0503 PRESSURE RELIEF VALVE (3 BAR)	61312668		●	●	●	●	●	●	●	●	●	●	●	●	●	●	●	●	●	
0507 SANITARY HEAT EXCHANGER (16 P.)	65104333		●	●	●	●	●	●	●	●	●	●	●	●	●	●	●	●	●	
0514 BY-PASS	65114917		●	●	●	●	●	●	●	●	●	●	●	●	●	●	●	●	●	
0515 GROMMET	60000808		●	●	●	●	●	●	●	●	●	●	●	●	●	●	●	●	●	
0519 INTERFACE 'SYSTEM +' OPEN	60001365								●	●	●	●	●	●	●	●	●	●	●	
0521 HYDRAULIC GROUP SUPPORT	65115797		●	●	●	●	●	●	●	●	●	●	●	●	●	●	●	●	●	
0550 PIPE (SAFETY VALVE OUTLET)	60001955		●	●	●	●	●	●	●	●	●	●	●	●	●	●	●	●	●	
0551 PIPE (C.H. FLOW - AL)	65115067	NOTA 2				●				●										
PIPE (C.H. FLOW - AL)	65115765	NOTA 2					●				●									
PIPE (C.H. FLOW - AL)	65119646	NOTA 2						●					●							
PIPE (C.H. FLOW - Cu)	65115763	NOTA 1	●				●		●				●							
PIPE (C.H. FLOW - Cu)	65115764	NOTA 1		●				●						●						
PIPE (C.H. FLOW - Cu)	65115915	NOTA 1			●					●										
0557 PIPE (D.H.W.RETURN)	65115935								●	●	●	●	●	●	●	●	●	●	●	
0560 CLIP D:10	65114933		●	●	●	●	●	●	●	●	●	●	●	●	●	●	●	●	●	
0561 CLIP	61307589		●	●	●	●	●	●	●	●	●	●	●	●	●	●	●	●	●	
0562 CLIP D18	65104259		●	●	●	●	●	●	●	●	●	●	●	●	●	●	●	●	●	
0563 CLIP D:12	65114932		●	●	●	●	●	●	●	●	●	●	●	●	●	●	●	●	●	
0581 O-RING 17.96X2.62	65104337		●	●	●	●	●	●	●	●	●	●	●	●	●	●	●	●	●	
0582 O-RING 17.86X2.62	61308091		●	●	●	●	●	●	●	●	●	●	●	●	●	●	●	●	●	
0585 O-RING 17.04X3.53	65104262		●	●	●	●	●	●	●	●	●	●	●	●	●	●	●	●	●	
0588 EXCHANGER GASKET	65114928		●	●	●	●	●	●	●	●	●	●	●	●	●	●	●	●	●	
0590 O-RING 11.91X2.62	65114940		●	●	●	●	●	●	●	●	●	●	●	●	●	●	●	●	●	

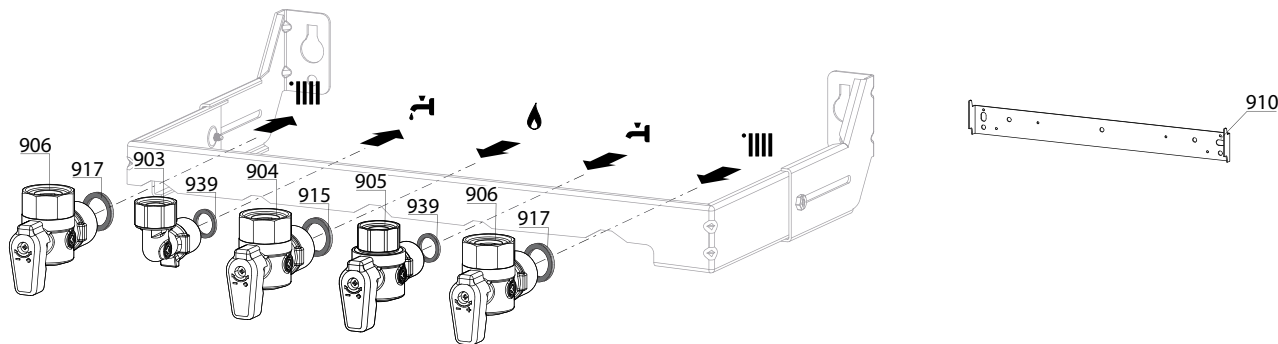
Nota 1: Per apparecchi con scambiatori primari in rame. - Nota 2: Per apparecchi con scambiatori primari in alluminio.



800



900



5000

5001
 Transf. gaz
 Conv. gas
 > **G31**
 (LPG - GPL)
 Trsf. gas
 Transf. gas

5002
 Transf. gaz
 Conv. gas
 > **G20**
 (NAT - MET)
 Trsf. gas
 Transf. gas

Accessories 5020
 Options
 Opzioni
 Accessorio
 Zubehör
 Opties

LIST OF THE ABBREVIATIONS

HW	: Hot water.
CW	: Cold water.
C	: Ceramic resistance (normal heating).
Ca	: Ceramic resistance (accelerated heating)
TP	: Immersion heater.
1F	: With fittings.
2F	: Without fittings.
3F	: With fittings and another outlet connection.
AMI	: With mixing valve.
SMI	: Without mixing valve.
PUISS	: Power of th appliance.
PN	: Appliance with normal pression.
LP	: Appliance with low pression.
PV	: Appliance with variable power.
PF	: Appliance with fixed power.

IDENTIFICATION PLATE

SERIAL NUMBER

10 Characters :	04 05 125 011	Sequential number
		Manufacturing day
		Year of manufacture
11 Characters :	1 95 065004 - 31	Technical number of the appliance
Month of manufacture : from 1 to 9 → Jan. to Sep., O → Oct., N → Nov., D → Dec.		Sequential number
		Year of manufacture
19 Characters :	08 05 0013199 900640031	Product reference
Year of manufacture		Sequential number
Month of manufacture		
20 Characters :	3675007 XX 2 07 070 00315	Sequential number
Product reference		Manufacturing day
Millenium of manufacture		Year of manufacture
21 Characters :	3675007 XX 07 070 0000315	Sequential number
Product reference		Manufacturing day
Year of manufacture		