



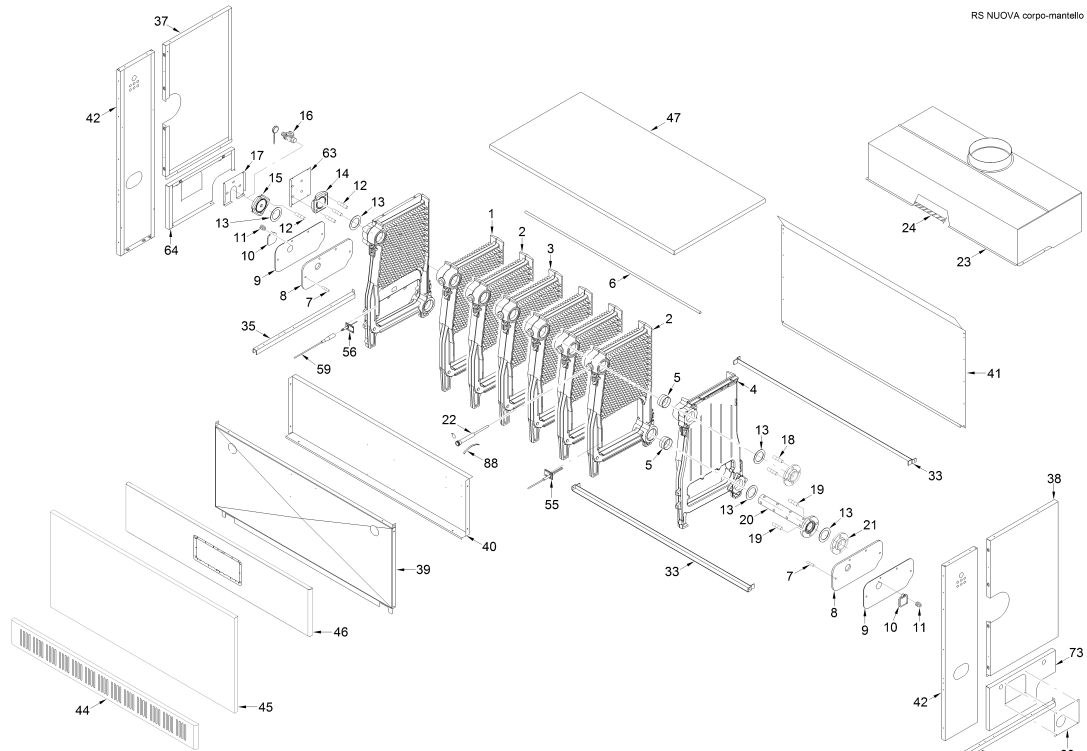
Fonderie Sime S.p.A. - Via Garbo, 27 - 37045 Legnago (VR) - www.sime.it
 Tribunale Verona 13531 - R.E.A. VR 171357 - C.C.P. 19423375 - N° Mecc. VR 014435
 Capitale Sociale Euro 5.521.200 int. versato - Codice Fiscale/Partita IVA n. IT 01275930236

Comfort Ambiente - Via Garbo, 27 - 37045 Legnago (VR)

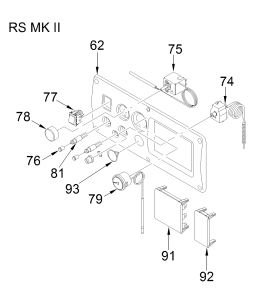
Tel +39 0442 631111 - Fax Servizio Commerciale: Italia +39 0442 631291 - Estero +39 0442 631293

Fax Servizio Tecnico +39 0442 631292 - Fax Ufficio Acquisti +39 0442 631292 - Fax Amministrazione +39 0442 631336

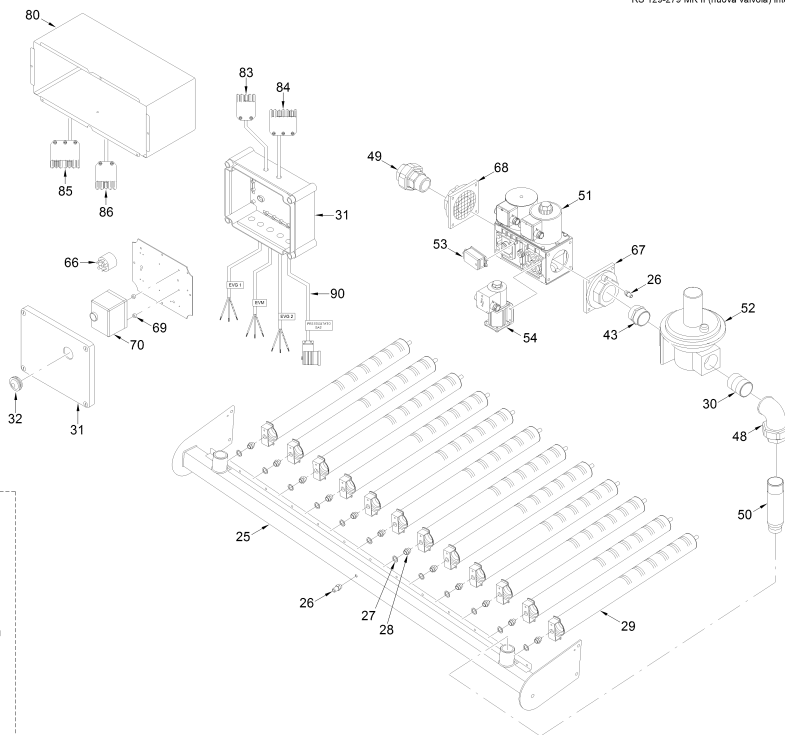
8053311 CALD.GAS MET.GRIG. RS151 Mk II



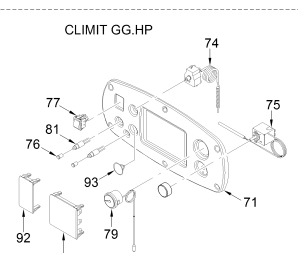
RS NUOVA corpo-mantello



RS MK II



RS 129-279 MK II (nuova valvola) interno



CLIMIT GG.HP

Posiz.	Codice	Descrizione
001	6096512	Left hand end section
002	6096614	Intermediate section with drill
003	6096613	Intermediate section
004	6096712	Right hand end section
005	6000403	Push nipple 2-1/2"

006A	6000539	Tie-rod M14x842	
007	6000609	Stud M8x34	
008	6105710	Combustion chamber door insulat	
009	6105801	Combustion chamber door	
010	6037601	Window	
011	2050000	Spring TDM	
012	6000608	Stud M12x40	
013	2030208	Piracriten gasket Ø 65x95x2	
014	6105102	Blank flange F.12/T	
015	6046700	Flange holding drain cock	
016	6020701	Drain cock 3/4"	
017	6182005	Casing lower hub panel	
018	6000606	Stud M12x50	
019	6000612	Stud M12x60	
020	6106100	Water distributor	
021	6192400	Flange 2"	
022	5004200	Bulb holder 1/2" L=190	
023A	5096703	Smoke chamber/down draught-dive	
024	1232400	Sealing rope Ø 15	
025A	6104823	Burner manifold	
026	6023100	Pressure test nipple Ø 1/8"	
027	6022003	Aluminium washer Ø 14	
028	6105001	Nozzle Ø 4,30 M14	MET
028A	6105003	Nozzle Ø 2,50 M14	GPL
029	6095100	Burner bar type 109/10 L=561	
030	6106807	Pipe extension L=60	
031	6002707	Junction box	
032	6266401	Plastic plug	
033A	6105553	Frame, front and rear part	
034	6105301	Frame, right hand side part	
035	6105401	Frame, left hand side part	
036	2003000	Pin M5 Zn	
037	6181605	Casing L.H. side rear upper pan	
038	6181505	Casing R.H. side rear upper pan	
039A	6122691	Casing lower inner panel	
040A	6122791	Casing upper inner panel	
041A	6122812	Casing rear panel	
042	6123052	Casing side front panel	
043	2040202	Nipple 1 1/2"	
044A	6296251	Casing front lower panel	
045A	6296351	Casing front central panel	
046A	6296651	Casing front upper panel	
047A	6301061	Casing top cover	
048	2040002	Union elbow F.F. 1-1/2"	
049	2040704	Union 1-1/2" MF	
050	6083402	Pipe reducer 1"	
051	6107401	Gas valve	
052	6291688	Gas pressure regulator	
053	6043102	Gas pressure switch	
054	6107402	By-pass gas valve	
055	6221613	Ignition electrode c/w resistan	
056	6221605	Ionisation electrode	
057	6000623	Stud M5x15 Zn	
059	6186515	Ionisation electrode cable	
060	6182105	Casing pilot burner panel	
061	6222600	Combustion chamber fixing plate	
062	6211011	Control panel	
063	6181905	Casing upper hub panel	
064	6181805	Casing L.H. side rear lower pan	
066	6266901	Anti-jamming filter	
067	6105158	Flange	
068	6105157	Flange + filter	
069	2213202	Space Ø 10 for control box	
070	6178822	Control box BRAHMA SM 191.2	
073	6181705	Casing R.H. side rear lower pan	
074	6001400	H.L. stat 100°C	
075	6159300	Adjustable boiler stat TRZ	
076	6044041	Red gem Ø 10	
077	6013501	Switch with warning light	
078	6240103	Handle Ø 35	
079	6146003	Thermometer 0-120°C	
080	6253211	Control panel cover	
081	6044016	Signal lamp	
083	6202116	5 pole socket with cable	
084	6202115	7 pole socket with cable	
085	6202113	7 pole plug with cable	
086	6202114	5 pole plug with cable	

087	2015000	Spring clip
088	2051000	Contact spring
090	6245386	Cable connector
700	6259501	Air/Smoke test pressure point
701	5158909	Control panel
702	6239700	AR1 phase-phase transformer
703	6233502	Fuse T 5A for control box CM 19
704	6272602	Connection kit for RVA43 progra
705	6050900	Set boiler assembling tools
707	5114600	Complete cast iron boiler block
715	5097908	Complete casing
722	5191604	Complete control panel
723	6253401	Fuse holder Ø5x20
725	5113700	Conversion kit to the L.P.G.